

Conference Schedule

Sunday, June 19-Tuesday, June 21

Sunday, June 19

IT In-Service	9:00am-5:00pm	S1050 (Auditorium)
Bike Check	12:00pm-8:00pm	VKW 141-143
Command Post	12:00pm-8:00pm	North Lobby, River Campus
Check-In	4:00pm-8:00pm	North Lobby, River Campus
Bike Mechanic <i>Volcanic Bicycles/Mike's Bike Park</i>	5:00pm-7:00pm	Bike Check
First-Timers Welcome	5:00pm-5:30pm	VWK Patio
Hospitality	5:30pm-7:30pm	VWK Patio
Instructor Briefing	6:00pm-6:30pm	VWK G14

Monday, June 20

Bike Check	7:00am-8:00pm	VKW 141-143
Command Post	7:00am-8:00pm	North Lobby, River Campus
Check-In	6:45am-7:45am	North Lobby, River Campus
Bike Mechanic <i>Volcanic Bicycles/Mike's Bike Park</i>	7:00am-9:00am; 12:00pm-1:00pm 5:00pm-7:00pm	Bike Check
Instructor Course	8:00am-6:00pm	S1050 (Auditorium)
Maintenance Course	8:00am-5:30pm	N1840 (Marshall)
Police-EMS-Security Cyclist Course	8:00am-5:00pm	M1400 (Alumni Center N)
Bicycle Response Team Training	8:00am-5:00pm	M2380
PESC II Course	8:00am-5:00pm	M1425
Lunch	11:30am-1:30pm	M1555 (River Café)
Hospitality	5:30pm-7:30pm	VWK Patio

Tuesday, June 21

Bike Check	7:00am-8:00pm	VKW 141-143
Command Post	7:00am-8:00pm	North Lobby, River Campus
Check-In	4:00pm-8:00pm	North Lobby, River Campus
Bike Mechanic <i>Volcanic Bicycles/Mike's Bike Park</i>	7:00am-9:00am; 12:00pm-1:00pm 5:00pm-7:00pm	Bike Check
Instructor Course	8:00am-5:00pm	S1050 (Auditorium)
Maintenance Course	8:00am-5:30pm	N1840 (Marshall)
Police-EMS-Security Cyclist Course	8:00am-5:00pm	M1400 (Alumni Center N)
Bicycle Response Team Training	8:00am-5:00pm	S2380
PESC II Course	8:00am-5:00pm	M1425
Lunch	11:30am-1:30pm	M1555 (River Café)
Hospitality	5:30pm-7:30pm	VWK Patio

Conference Schedule

Wednesday, June 22-Thursday, June 23

Wednesday, June 22

Bike Check	7:00am-11:00pm	VKW 141-143
Command Post	7:00am-8:00pm	North Lobby, River Campus
Check-In	6:45am-7:45am; 4:00pm-8:00pm	North Lobby, River Campus
Bike Mechanic <i>Volcanic Bicycles/Mike's Bike Park</i>	7:00am-9:00am; 12:00pm-1:00pm 5:00pm-7:00pm	Bike Check
Instructor Course	1:00pm-11:00pm	S1050 (Auditorium)
Maintenance Course	8:00am-5:30pm	N1840 (Marshall)
Police-EMS-Security Cyclist Course	1:00pm-10:00pm	M1400 (Alumni Center N)
Bicycle Response Team Training	8:00am-5:00pm	S2380
PESC II Course	8:00am-5:00pm	M1425
E-Bike Training Module	8:00am-6:00pm	M1370 (Deeds)
Lunch	11:30am-1:30pm	M1555 (River Café)
Instructor Briefing	5:30pm-6:00pm	M1375 (Hawthorne)
Exhibit Hall <i>Reception sponsored by MOCEAN Tactical</i>	5:30pm-8:30pm	N1650 (Meyer)

Thursday, June 23

Bike Check	7:00am-11:00pm	VKW 141-143
Command Post	7:00am-8:00pm	North Lobby, River Campus
Check-In	6:45am-7:45am	North Lobby, River Campus
Bike Mechanic <i>Volcanic Bicycles/Mike's Bike Park</i>	7:00am-9:00am; 12:00pm-1:00pm 5:00pm-7:00pm	Bike Check
Instructor Course	9:00am-6:00pm	S1050 (Auditorium)
Maintenance Course	8:00am-5:30pm	N1840 (Marshall)
Police-EMS-Security Cyclist Course	8:00am-5:00pm	M1400 (Alumni Center N)
Workshops	8:00am-10:45pm	See Detailed Schedule
Exhibit Hall	11:00am-1:30pm	N1650 (Meyer)
Lunch	11:30am-1:30pm	M1555 (River Café)
Exhibit Hall	5:00pm-8:00pm	N1650 (Meyer)



Command Post: 937-613-3120

North Lobby, River Campus

On Campus Emergencies: 937-229-2121

UDPD Dispatch

Conference Schedule

Friday, June 24-Saturday, June 25

Friday, June 24

Bike Check	7:00am-6:00pm	VKW 141-143
Command Post	7:00am-3:00pm	North Lobby, River Campus
Check-In		North Lobby, River Campus
Bike Mechanic <i>Volcanic Bicycles/Mike's Bike Park</i>	7:00am-9:00am; 12:00pm-1:00pm 4:00pm-6:00pm	Bike Check Competition Site
Instructor Course	7:00am-2:30pm	S1050 (Auditorium)
Maintenance Course	8:00am-2:30pm	N1840 (Marshall)
Workshops	8:00am-2:30pm	See Detailed Schedule
Lunch	11:30am-1:30pm	M1555 (River Cafe)
Parade to Competition Muster	3:00pm	Staging Area (VWK)
Parade Departure	3:15pm	Staging Area (VWK)
Group Photo	3:30pm	Humanities Plaza
Course Walk-Through/Safety Briefing	3:45pm	Humanities Plaza
Competition	4:00pm-6:00pm	
Dinner & Awards Ceremony	6:00pm-8:00pm	Old River Park
Shuttles between VWK and Park	5:45pm-8:15pm	

Saturday, June 25

Bike Check	7:00am-5:00pm	VKW 141-143
Silent Auction Pick-Up	8:00am-12:00pm	North Lobby, River Campus
Bike Mechanic <i>Volcanic Bicycles/Mike's Bike Park</i>	7:00am-8:00am	Bike Check
Advanced Off-Road Riding	8:00am-12:00pm	Bike Staging Area A
Tour of Dayon	8:00am-12:00pm	Bike Staging Area B
BRT Instructor Module	8:00am-12:00pm	S2055
EMSCI-P/SCI Transition Course	8:00am-12:00pm	S2035
P/SCI to EMSCI Transition Course	8:00am-12:00pm	S2035

Silent Auction/Raffles

Bid high and often on the fine products on display near the Command Post. **All bids must be entered by 5pm on Thursday, June 23.** Winners will be posted in Command Post. Items must be picked up and paid for by 12pm on Saturday, June 25.

Raffle Tickets! \$20 each/six for \$100

Volcanic Bicycle, MSRP \$4000, Volcanic Bicycles

Code Bikes Code 3 Bicycle, MSRP \$1700, Police Bike Store

Glock 43R, MSRP \$529

Drawing: Awards Dinner, Friday, June 24.



THE TOUGHEST PATROL BIKES ON EARTH!

POLICE
BIKE STORE.com

Workshop Schedule: Thursday

Time	Workshop Title	Lead Instructor	Location
0800-1145	Advanced Suspect Contacts	Shaker, Patrick	M2265
	Bicycle Response Team Roundtable	Wear, Mike	M1370 (Deeds)
	Bike Maintenance 101	Hatcher, Bob	M1425
	DIRT Devo for the IPMBA Instructor	Trujillo, Mitch	Bike Staging Area C
	Electrified: An Intro to E-Bikes for IPMBA Instructors	Pearce, Erik	N1640
	Equipment Selection in an Evolving Industry	Rymon, Josh	N1630
	Firearms and Street Survival	Gonzales, Artie	Bike Staging Area B
	Indoor Bike Park Skills Bachelor's Degree	Roberts, Rod	Bike Staging Area C
	Mastering Stairs and Steep Descents	Gaby, Adam	Bike Staging Area B
	Riding Outside the Box	Burkitt, Ron	Bike Staging Area A
0800-1615	Basic Swiftwater Rescue for Bike Teams	Howells, Timothy	M1200
	Cycling Savvy: Empowerment for Unlimited Travel	Lalli, Colby	M2340
	Discover Your Urban Riding Playground	Bixby, Scott	Bike Staging Area D
1130-1330	LUNCH		M1555 (River Café)
1330-1445	Campus Community Policing	Noftz, Steve	M2265
	Supervising Bicycle Units	Shaker, Patrick	M2300
	Tour de New ITK	Zermeno, Thomas	M2340
	Tourism-Oriented Policing	Humes, Andrew	N1630
1330-1715	Bike Maintenance 102	Hatcher, Bob	M1425
	Car Stops: Preparing for the Worst Case Scenario	Green, Jayme	Bike Staging Area A
	Electrified: An Introduction to E-Bikes for Instructors	Pearce, Erik	N1640
	Firearms and Street Survival	Gonzales, Artie	Bike Staging Area B
	Indoor Bike Park Skills Master's Degree	Robert, Rod	Bike Staging Area C
	Krav Maga for Public Safety Cyclists	Prust, Murray	Bike Staging Area B
	Monday Morning Ride: Navy Yard Active Shooter	Wear, Michael	M1370 (Deeds)
	Technical/Off-Road Skill Building 101	Coyle, Jake	Bike Staging Area D
1500-1645	Bike Theft Prevention Task Force <i>Sponsor: Bike Index</i>	Trujillo, Mitch	M2300
	Crisis Intervention Team Foundations	Noftz, Steve	M2265
	Youth Bicycle Safety Education	Beck, Kirby	N1630
1900-2245	Nightlife District Operations & Tactics, <i>Sponsor: Cygolite Bicycle Lighting Systems</i>	Humes, Andrew	M2265

Workshop Schedule: Friday

Time	Workshop Title	Lead Instructor	Location
0800-0915	Crisis Intervention Team Foundations	Noftz, Steve	N1630
0800-1145	Advanced Suspect Contacts	Shaker, Patrick	M2265
	Car Stops: Preparing for the Worst Case Scenario	Green, Jayme	Bike Staging Area A
	DIRT Devo for the IPMBA Instructor	Trujillo, Mitch	Bike Staging Area C
	Disc Brake Clinic	Bixby, Scott	M1425
	Electrified: An Intro to E-Bikes for IPMBA Instructors	Pearce, Erik	M1370
	Equipment Selection in an Evolving Industry	Rymon, Josh	CANCELLED
	Indoor Bike Park Skills PhD	Roberts, Rod	Bike Staging Area D
	Krav Maga for Public Safety Cyclists	Prust, Murray	Bike Staging Area B
	Mastering Stairs and Steep Descents	Gaby, Adam	Bike Staging Area C
	Monday Morning Ride: Navy Yard Active Shooter	Wear, Michael	M1198
	PTSD Awareness and Mindfulness Ride	Daniels, Allen	M1400 (Alumni Center N)
	Riding Outside the Box	Burkitt, Ron	Bike Staging Area A
	Technical/Off-Road Skill Building 102	Humes, Andrew	Bike Staging Area D
1130-1330	LUNCH		M1555 (River Café)
1315-1430	Bike Theft Prevention Task Force <i>Sponsor: Bike Index</i>	Trujillo, Mitch	S2080
	Campus Community Policing	Noftz, Steve	M1370
	Supervising Bicycle Units	Shaker, Patrick	M2265
	Tour de New ITK	Zermeno, Thomas	M1400 (Alumni Center N)
	Tourism Oriented Policing	Humes, Andrew	N1630
	Youth Bicycle Safety Education	Beck, Kirby	M2300

Workshop Schedule: Saturday

Time	Workshop Title	Lead Instructor	Location
0800-1200	Advanced Off-Road Riding	Bixby, Scott	Bike Staging Area B
	Bicycle Response Team Instructor Module	Wear, Michael	S2055
	EMSCI to PCI/SCI Transition	Sellers, Bobby	S2035
	PCI/SCI to EMSCI Transition	Sellers, Bobby	S2035
	Tour of Dayton	Lalli, Colby	Bike Staging Area A

**Please report to the assigned meeting room for your workshops.
If the workshop is on-bike, retrieve your bike and meet at the
designated staging area.**

Essential Information

Command Post

North Lobby, River Campus
(Curran Place), 1700 S. Patterson
Blvd.

937-613-3120

Please direct all inquiries to the Command Post staff. If they do not know the answers to your questions, they will contact the appropriate person or persons.

Hours:

Sunday, June 20: 12:00pm-8:00pm

Monday, June 21- Thursday, June 23: 7:00am-8:00pm

Friday, June 24: 7:00am-3:00pm

Staff will be on call for urgent situations only when the Command Post is closed.

On-Campus

Emergency Contact:

937-229-2121

Bike Check

VKW Residence Hall Room 143

Hours:

Sunday, June 19: 12:00pm-8:00pm

Monday, June 20: 7:00am-8:00pm

Tuesday, June 21: 7:00am-8:00pm

Wednesday, June 22: 7:00am-11:00pm

Thursday, June 23: 7:00am-11:00pm

Friday, June 24: 7:00am-6:00pm

Saturday, June 25: 7:00am-5:00pm

Staff will be on call at 937-613-3120 for urgent situations when the Bike Check is closed. **Bikes will not be released without bike claim check or proof of ownership.**

To alleviate elevator congestion and minimize the risk of damage, you are requested to store your bike in the Bike Check.

If you are staying in a hotel or residence hall prior to June 19 or after June 25, you must store your bike in room on those dates.

Access to River Campus (Curran Place)

A bike route from main campus via Old River Park will be marked with signs. The gate access code is 64588*. This is for BIKES/PEDS only; no automobiles.

Access by automobile is via S. Patterson Blvd.

Bike Mechanic

Volcanic Bicycles/Mike's Bike Park

Sunday, June 19: 5:00pm-7:00pm

Monday, June 20- Thursday, June 23: 7:00am-9:00am; 12:00pm-1:00pm; 5:00pm-7:00pm

Friday, June 24: 7:00am-9:00am; 12:00pm-1:00pm; 4:00pm-6:00pm

Saturday, June 25: 7:00am-8:00am

On-Call: Command Post (availability not guaranteed)

First-Timers Welcome

Sunday, June 19: 5:00pm-5:30pm (VKW Patio)

Hospitality

Sunday-Tuesday, June 19-21: 5:30pm-7:30pm; VKW Patio.

Hosted by the 2022 Conference Committee.

Exhibit Hall

Receptions

Wednesday, June 22: Opening Reception, Exhibit Hall, 5:30pm-8:30pm. Sponsored by MOCEAN Tactical.

Thursday, June 23: 5:00pm-8:00pm, Exhibit Hall.

Competition & Awards Dinner

Friday, June 24: See page 13 for details.

Certificates

Course Certificates: issued at the end of each course; an informal graduation will take place on Friday at the Awards Ceremony.

Conference Certificate of Attendance: Complete the *Certificate of Attendance Application Form* provided in this packet and have it initialed by the instructor of each workshop you attend.

You **must** attend a minimum of two workshops on Thursday and two on Friday in order to be eligible for a certificate, unless you are attending an all-day session or the PESC.

If you do not obtain an instructor's initials, you will not get credit for attending, even if you pre-registered or checked in via the app. Return the application to the Command Post or to the IPMBA office within two weeks of the conference.

Certificates will be mailed within eight weeks of the end of the conference.

Course Evaluation Forms

Go to the App.

Click on Schedule.

Go to the Last Day of the Course.

Find and Open the Course.

Complete the Evaluation.

Workshop Evaluation Forms

Go to the App.

Click on Schedule.

Find and Open the Workshop.

Complete the Evaluation.

Overall Conference Evaluation Form

Go the App.

Click on the Conference Survey Icon.

Complete the Survey.

Exhibitors

River Campus, N1650 (near Command Post). Wednesday, June 22, 5:30pm-8:30pm; Thursday, June 23, 11:00am-1:30pm & 5:00pm-8:00pm; Opening Reception on Wednesday sponsored by **MOCEAN Tactical**.



Benelli

Contact: Ron Toler

Telephone: 800-832-2966

Email: usasales@benellipolicebike.com

Website: <https://mailchi.mp/4616d08c5aa7/benelli-public-service-bike>

What: E-Bikes developed specifically for public service use



DuraBike

Contact: Brenden Westin

Telephone: 207-956-1650

Email: brenden.westin@durabike.us

Website: www.durabike.us

Product: DuraBike: low-maintenance, high-reliability patrol bikes



ISM Saddles, LLC

Contact: Laura Toll

Telephone: 813-909-1441

Email: laura@ismseat.com

Website: www.ismseat.com

Product: ISM Saddles is the recognized leader in bicycle saddle design, dedicated to the health and wellness of all cyclists.



MOCEAN Tactical

Contact: Tom Audley

Telephone: 336-582-0757

Email: csdesk@moceantactical.com

Website: www.moceantactical.com

Product: Bike patrol and tactical apparel



Police Bike Store

Contact: Michael Espejo

Telephone: 973-366-5868

Email: info@policebikestore.com

Website: www.policebikestore.com

Product: Code police bikes, C3Sports lighting products, sirens, and more.



R&B Fabrications

Contact: Dan Eakins

Telephone: 419-594-2743

Email: dan@rbfab.com

Website: www.rbfab.com

Product: For nearly 50 years, R&B Fabrications, Inc., has proudly built the highest quality, American-made bike panniers, EMS, and fire bags.



Recon Power Bikes

Contact: Jeff Fuze

Telephone: 888-485-2589

Email: jeff@reconpowerbikes.com

Website: www.policepowerbikes.com

Product: Electric Police Bikes; Bike-Based LPR (License Plate Recognition)



Sound Uniform Solutions

Contact: Julie Cruise

Telephone: 253-625-7420

Email: juliecruise@olyuniforms.com

Website: <https://sounduniforms.com/>

Product: Highest Quality Bike Uniforms Since 1987! We Love IPMBA & Look Forward to Helping You!



Volcanic Bicycles

Contact: Nathan Keenan

Telephone: 509-427-8623

Email: sales@volcanicbikes.com

Website: www.volcanicbikes.com

Product: Patrol bikes, riding gear accessories; replacement parts and tools

4Bike-Police.com

Contact: Mark Leonard

Telephone: 501-517-5338

Email: mark@4bike-police.com

Website: www.4bike-police.com

Product: Police Bike and Duty Gear Store. Complete bike team set up and mobile maintenance.

ABP Consulting Solutions

Contact: Noah Wallington

Telephone: 602-545-6246

Email: nwallington@apbconsultingsolutions.com

Website: <https://apbconsultingsolutions.com/>

Product: Non-lethal tools (the GLOVE)

Haven Gear

Contact: Elyssa Ratliff

Telephone: 321-254-9569 ext. 634

Email: elyssa.ratliff@havengear.com

Website: www.havengear.com

Product: Riot equipment, gear and accessories, protective equipment

Exhibitors & Sponsors

Patrol Bike Systems/Bike Tools

Contact: Mark Eumurian

Email: patrolbikesystems@gmail.com

Phone: 651-773-8763

Website: www.biketoos.com

Product: Park Tools, Patrol Cycle shoes, more

Pax USA

Contact: Kevin Dougherty

Email: info@paxbags-us.com

Website: www.paxbags-us.com

Product: Bike bags: pannier bags, handlebar bags, oxygen bags

Pedego Electric Bikes

Contact: Carly San Filippo

Telephone: 949-994-1493

Email: carly@pedego.com

Website: www.pedego.com

Product: Showcasing three different police bike models

Host Agencies

Dayton Police Department

Five Rivers MetroParks Ranger Division

University of Dayton Police Department



Sponsors & Supporters

Allied Supply

Bike Index

BiSaddle

Code Credit Union

Cygolite Bicycle Lighting Systems

Dayton Convention & Visitors Bureau

Dayton Police F.O.P. Lodge 44

EcoSheep

EMS World

Galeo

Goodwill of the Miami Valley

Heidelberg Distributing

Kettering Health Network

Miami Valley Crime Prevention Association

Officer.com

Pedaling Innovations

Requarth Lumber

Sandy's Towing and Recovery

TOGS

Troy Fish & Game Club

Uncle Sam's Avengers Motorcycle Club

Whistles for Life

Wright Smiles

Special Thanks To:



MOCEAN



SOUND UNIFORM
SOLUTIONS



THE TOUGHEST PATROL BIKES ON EARTH!

POLICE
BIKE STORE.com



ENGINEERED TO SHINE



Corporate Members



IPMBA
Corporate Member

Support our Corporate Members

IPMBA proudly recognizes the following organizations for their continued support and assistance to IPMBA and the profession of public safety cycling. They have helped to ensure that we can continue our mission of providing education, training, and resources for public safety cyclists worldwide.



Benelli

Product: E-Bikes Developed Specifically for Public Service Use
Phone: 800-832-2966
Website: mailchi.mp/4616d08c5aa7/benelli-public-service-bike



Bicycle Patrol Outfitters

Product: Bike Patrol Products
Phone: 951-318-7341
Website: www.police-bikes.com



Cera Products

Product: Rice-Based Hydration Products
Phone: 706-221-1542
Website: www.ceraproductsinc.com



Cygolite Bicycle Lighting Systems

Product: High-Intensity Lighting Systems, Designed and Built in the USA
Phone: 949-297-4972
Website: www.cygolite.com



DuraBike

Product: Bikes
Phone: 207-956-1650
Website: <https://durabike.us/>



EMS World

Product: Leading EMS Magazine, Website, and Expo
Phone: 800-547-7377
Website: www.emsworld.com



GeoOrbital

Product: GeoOrbital Public Safety Electric Wheel
Phone: 781-248-5594
Website: www.geoo.com/pages/public_safety



ISM Saddles

Product: ISM Bike Seats
Phone: 813-909-1441
Website: www.ismseat.com



Jones & Bartlett Public Safety Group

Product: Educational Materials, Complete Guide to Public Safety Cycling
Phone: 800-832-0034
Website: www.psglearning.com



MOCEAN Tactical

Product: Technical Bike Patrol Uniforms
Phone: 336-582-0757
Website: www.moceantactical.com



NAEMT

Product: Association of EMS Practitioners
Phone: 601-924-7744
Website: www.naemt.org



PWR

Product: E-Mobility Solutions
Phone: 609-828-5918
Website: www.pwrbike.com



Police Bike Store

Product: Complete Line of Public Safety Bikes & Accessories
Phone: 973-366-5868
Website: www.policebikestore.com



RECON

Product: Law Enforcement E-Bikes
Phone: 888-485-2589
Website: www.policepowerbikes.com



R & B Fabrications

Product: Panniers, Duty Bags & Safety Vests
Phone: 800-553-1911
Website: www.rbfab.com



RZ Mask, LLC

Product: The World's Most Comfortable Air Filtration Mask
Phone: 952-324-5474
Website: <https://rzmasks.com/pages/public-safety-1>



Setina

Product/Service: Vehicle Safety Equipment
Phone: 800-426-2627
Website: <https://setina.com>



Sound Uniform Solutions

Product/Service: Bratwear and Olympic Uniforms
Phone: 253-625-7420
Website: www.sounduniforms.com



Volcanic Bicycles

Product: Patrol Bicycles, Hand-Built in the USA
Phone: 509-427-8623
Website: www.volcanicbikes.com

IPMBA 2022 APP

The 2022 IPMBA Conference App, powered by Crowd Compass, offers the following features:

- Attendee List
- Exhibitor and Sponsor Lists
- Maps and Floorplans
- Schedules
- Speaker and Instructor Bios
- Social Activity

App Password:
ipmba2022



Logging In Via Invitation

Download the App

- 1. Find your Invitation.** Check the email you used to register for an invitation message from CrowdCompass.
- 2. Download the App.** Click **Download the App** to be taken to the App Store. Download the **Crowd Compass Attendee Hub** on your device. Once it is installed, search for **IPMBA**. Download the **IPMBA 2022** app.

Verify Your Account

- 1. Return to your Invitation.** Once the app has finished installing, open your invitation email again.

Click **Verify Account**.

- 2. Confirm your Verification.** Click **Open App** to complete the verification via your brand new mobile app.
- 3. Login** to enjoy all the features!

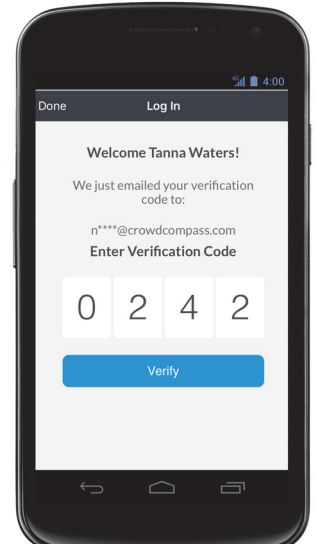
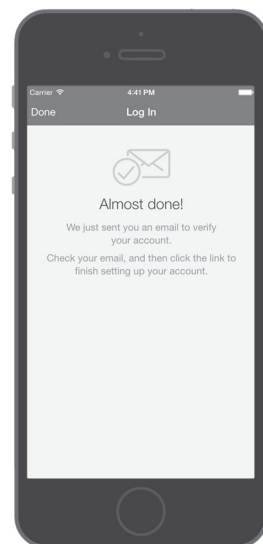
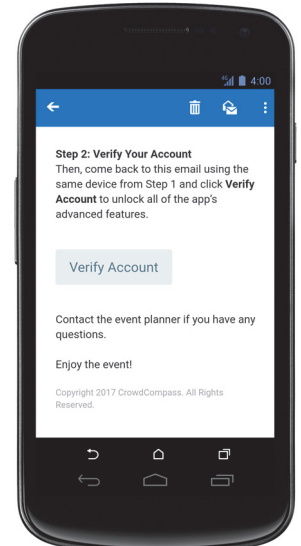
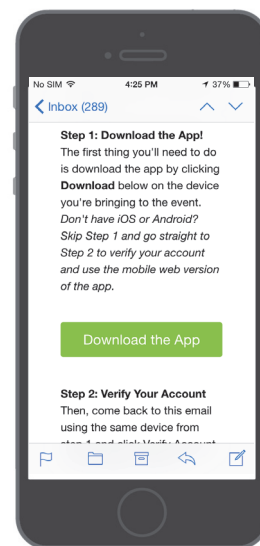
Logging In Via the App

Get the Email

- 1. Download the App.** Find and install the **Crowd Compass Attendee Hub**. Once it is installed, search for **IPMBA**. Download the **IPMBA 2022** app
- 2. Enter your details.** Tap **Log in for more features**. Enter your first and last name where prompted, then tap **Next**. Enter an email address where you'd like your verification email sent, then tap **Next** one more time.

Verify Your Account

- 1. Open your email.** Exit the app and open your verification email. You'll see it includes your four-digit verification code.
- 2. Enter the code.** Return to the app and enter the verification code, then tap **Verify** to log in to your mobile app.
- 3. Login** to enjoy all the features!



Certificate of Attendance Form

In order to obtain an official **Certificate of Attendance** for the 2022 IPMBA Conference, you must attend at least two workshops on *both* Thursday and Friday, unless you are attending one of the all-day sessions or the PESC. Please have the instructor of each workshop you attend initial and date the corresponding workshop below. (If there are no initials, credit will not be given to you for that workshop.)

Your certificate will be mailed to the address on file.

Name: _____

Department: _____

Phone Number: _____ Email Address: _____

Please rate each workshop that you attended. ("1" = poor and "5" = excellent)

Date	Initials	Workshop Title	Rating
		Advanced Off-Road Riding	1 2 3 4 5
		Advanced Suspect Contacts	1 2 3 4 5
		Basic Swiftwater Rescue for Bike Patrol Teams (all-day)	1 2 3 4 5
		Bicycle Response Team Instructor Development	1 2 3 4 5
		Bike Maintenance 101	1 2 3 4 5
		Bike Maintenance 102	1 2 3 4 5
		Bike Theft Prevention Task Force	1 2 3 4 5
		BRT Roundtable	1 2 3 4 5
		Campus Community Policing	1 2 3 4 5
		Car Stops	1 2 3 4 5
		Crisis Intervention Team Foundations	1 2 3 4 5
		Cycling Savvy: Empowerment for Unlimited Travel (all-day)	1 2 3 4 5
		DIRT Devo for the IPMBA Instructor	1 2 3 4 5
		Disc Brake Clinic	1 2 3 4 5
		Discover Your Urban Playground (all-day)	1 2 3 4 5
		Electrified: An Introduction to E-Bikes for IPMBA Instructors	1 2 3 4 5
		EMSCI to PCI/SCI Transition Course	1 2 3 4 5
		Equipment Selection in an Evolving Industry Roundtable	1 2 3 4 5

Date	Initials	Workshop Title	Rating
		Firearms and Street Survival	1 2 3 4 5
		Indoor Bike Park Skills Bachelor's Degree	1 2 3 4 5
		Indoor Bike Park Skills Master's Degree	1 2 3 4 5
		Indoor Bike Park Skills PhD	1 2 3 4 5
		Krav Maga for Public Safety Cyclists	1 2 3 4 5
		Mastering Stairs & Steep Descents	1 2 3 4 5
		Monday Morning Ride: Navy Yard Active Shooter	1 2 3 4 5
		Nightlife District Operations & Tactics	1 2 3 4 5
		PCI/SCI to EMSCI Transition Course	1 2 3 4 5
		PTSD Awareness & Mindfulness Ride	1 2 3 4 5
		Riding Outside the Box	1 2 3 4 5
		Supervising Bicycle Units	1 2 3 4 5
		Technical/Off-Road Skill Building 101	1 2 3 4 5
		Technical/Off-Road Skill Building 102	1 2 3 4 5
		Tour de New ITK	1 2 3 4 5
		Tour of Dayton	1 2 3 4 5
		Tourism-Oriented Policing	1 2 3 4 5
		Youth Bicycle Safety Education	1 2 3 4 5

Drop off: Command Post before 5pm on Friday, June 24.

Mail to: IPMBA • Conference Certificate • 583 Frederick Rd. Suite 5B • Baltimore MD 21228

Fax to: 410-744-5504 • **Email to:** events@ipmba.org

🚲 **FORMS RECEIVED AFTER JULY 15 WILL NOT BE PROCESSED** 🚲

Competition

Friday, June 24 | University of Dayton—Register by June 23, 3:00pm

Bike Parade Muster: 3:00pm

Bike Parade Departure: 3:15pm

Group Photo: 3:30pm

Course Walk-Through and Safety Briefing: 3:45pm

Competition: 4:00pm

Dinner & Awards Ceremony: 6:00pm, Old River Park

Registration Deadline: Complete and return this form to the Check-In Desk or email it to dmba10u@yahoo.com no later than **Thursday, June 23, at 3:00pm.**

Public Safety Category (Police, EMS, Security): Individuals or teams of four. Mixed teams (e.g., two police, one EMS, and one security) are permitted. **Team members must register at the same time. If all of your team members have not registered by 3pm on Thursday, you will ride as an individual only. You will NOT be assigned to a team.**

Medals will be awarded to the top three teams and the top two winners in the following age groups: Male under 30, Male 30-39, Male 40-49, Male 50-59, Male 60+, Female under 30, Female 30+.

Open Category (vendors, guest presenters, and guests): Individuals. Medals will be awarded to the top three riders.

E-Bike Category (public safety, vendors, guest presenters, and guests): Individuals. Medals will be awarded to the top three riders. Riders may compete on a conventional bike in their respective category and/or on an e-Bike.

The 2022 Host Agency Committee Welcomes You to an Awards Dinner! Shortly after the conclusion of the competition. Medals and awards will be presented, raffle prizes drawn, and an informal graduation ceremony conducted!

NAME: _____ **AGENCY:** _____

CITY, STATE: _____ **CELL # :** _____

CATEGORY: Police EMS Security **Open (specify):** _____

GENDER: Male Female **AGE GROUP:** > 30 30-39 40-49 50-59 60+

BIKE TYPE: Conventional Bike Only (Individual or Team) E-Bike Only (Individual Only) Both

INDIVIDUAL (Conventional and/or E-Bike) **TEAM (Conventional Bike Only)**

TEAM NAME: _____

TEAM MEMBERS (not including me): 1) _____

2) _____ 3) _____

Brief Bio/Fun Facts about Me: _____

Release of Liability

I, _____, having registered for the annual IPMBA obstacle course competition, and being fully aware of the risks of injury and death, hereby save and hold harmless the International Police Mountain Bike Association, the University of Dayton, City of Dayton, Five Rivers MetroParks, the Dayton Police Department, the University of Dayton Police Department, the Five Rivers MetroParks Ranger Division, well as their partnering agencies, agents, volunteers, or employees from any and all causes of action, suits, debts, damages, judgments, and demands whatsoever arising from my participation in this IPMBA Obstacle Course Competition. I further acknowledge that neither IPMBA, University of Dayton, City of Dayton, Five Rivers MetroParks, the Dayton Police Department, the University of Dayton Police Department, the Five Rivers MetroParks Ranger Division, or their partnering agencies, volunteers or employees, will be held responsible for any injuries or death that may be caused by negligence of the persons or entities listed above during my participation in this competition. Furthermore, I freely and voluntarily assume any and all risks known or unknown to me that are inherent to being a participant in this competition. I acknowledge that I have read, understand, and will adhere to the rules I have been given. I also grant permission to IPMBA to use any photos or videos of me taken in conjunction with this competition.

Signed: _____ Date: _____

Competition Rules

COURSE. There will not be a pre-ride of the course prior to the event. There will be a safety briefing, walk-through, and demonstration of the course upon arrival at the event site.

COMPETITORS ON COURSE. Only one competitor at a time may start the course. Depending on the course length, more than one competitor may be allowed on the course; however, there shall not be more than two participants on the course at any one time. The Competition Coordinator, the Starting Coordinator and the Safety Officer will jointly determine if the course can safely accommodate more than one rider at one time. Depending on course size and number of participants, starts will be spaced approximately 1-3 minutes apart. Competitors will not be allowed to start in a “head to head” fashion.

WALK-THROUGH. Upon completion of the walk-through and demonstration, all riders must be within the staging area, ready to ride. Riders will be prompted to move to the starting line at their respective times. No rider will be allowed to ride the competition course if a liability waiver is not signed or if the Starting Coordinator, who will conduct a safety inspection, deems the rider to be in non-compliance with any equipment or safety requirements.

STARTING. No one other than the participant will be allowed in the starting chute at the time of the start. The start will be from a standing, power pedal position. There will be no rolling starts and no assisted starts. All starts will begin from a dead stop. Upon being called, riders will move to the starting line, be asked if they are ready, and then be told to “go”.

OBSTACLES. Each participant must negotiate all obstacles on bike or on foot, at the discretion of the rider. A rider may not circumnavigate an obstacle to enhance their final time. If a rider does not complete an obstacle cleanly, the rider will be required to go back and attempt the obstacle again. A participant need only make a second attempt to cleanly complete the obstacle before continuing on, whether or not they are successful on the second try.

FALLS. Falls, or damage to the bike as a result of a fall or operator error, are not grounds for re-ride. A judge may award a re-ride in the event of a flat tire or other unforeseeable mechanical failure, if a spectator or another rider impeded the rider, or if the course is called “cold” due to some safety concern. Re-rides will take place at the end of the competition, after all riders have completed their runs.

FINISH. A rider’s time will end with his/her front tire crossing the finish line. A rider may carry his/her bike across the finish line to complete the course.

UNIFORMS AND EQUIPMENT REQUIREMENTS. As described previously, teams may be mixed, combining riders from all public safety cycling professions.

MINIMUM EQUIPMENT REQUIREMENTS. Properly Maintained Public Safety Bike: Riders are strongly encouraged to ride their department-issued bikes, set up for patrol. However, riders who are not permitted to bring their duty equipment to the conference and/or who have rented bikes (if available) will be permitted to compete if the bike is equipped in a substantially similar manner to a typical duty bike. Bikes will be checked by the Starting Coordinator to ensure that they are properly equipped. The Starting Coordinator will also conduct a safety inspection of the bicycle and rider. Inferior or poorly maintained bicycles will not be permitted. Any rider in any category who does not meet proper safety measures will not be allowed to ride.

Because some departments allow knobby tires on patrol bikes due to local riding conditions, slicks, combination, fat, and knobby tires will be all accepted. However, it is strongly recommended that knobby tires not be used during the competition.

Public Safety Category

- Helmet, gloves, eye protection and pedal retention ARE required. No exceptions.
- Duty uniform is preferred.
- Duty belts/vests and gear for police and security officers are NOT required.
- Body armor is NOT required.
- EMS riders are NOT required to carry panniers with weight.

Open Category

- Helmet, gloves, eye protection, and pedal retention ARE required. No exceptions.

E-Bike Category

- Riders may compete on a conventional bike in their respective category and/or on an e-Bike.
- Riders competing on both types of bikes will first ride the course on a conventional bike.
- Helmet, gloves, eye protection, and pedal retention devices ARE required. No exceptions.