

BICYCLE RIDERS... Know the Law

Before You Ride!

Obeying Bicycle Laws *Will Keep You Safe!*

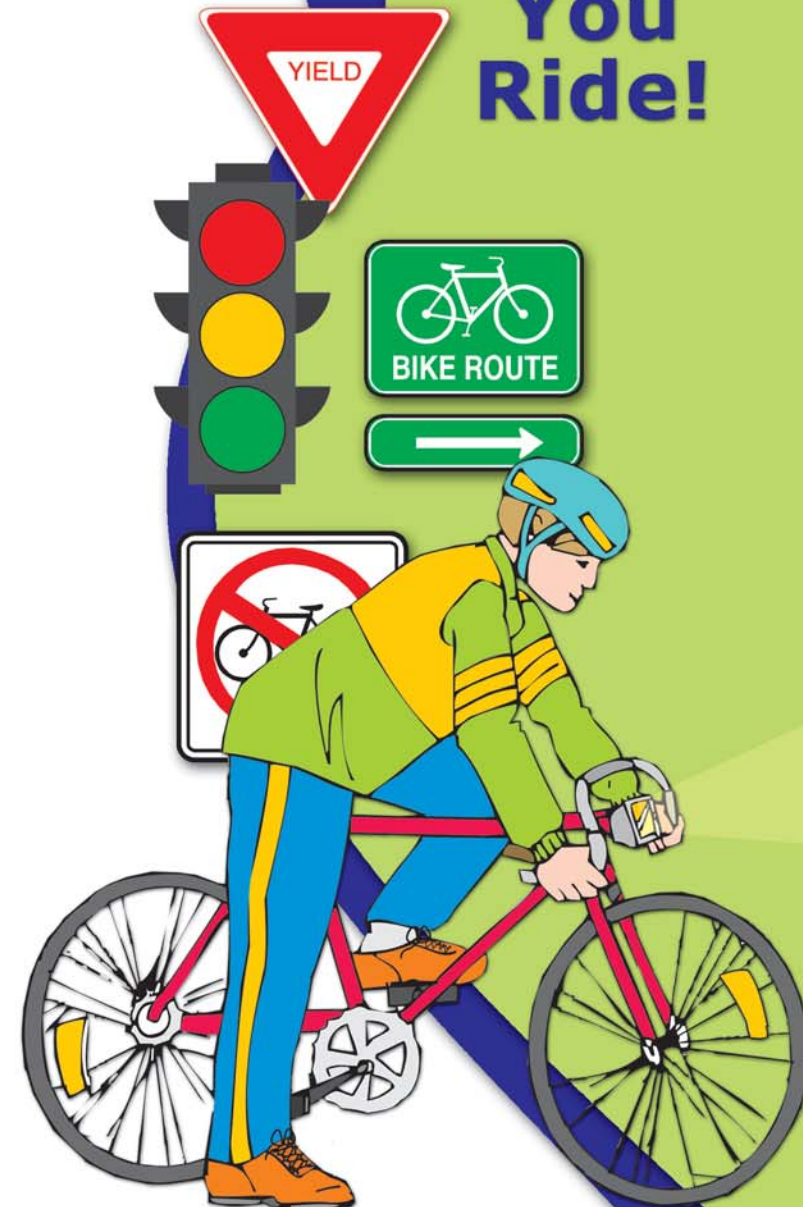
Riding a bicycle is a great way to get exercise and see the beautiful sights of the First State! While on your bike, however, keep in mind that there are certain laws that every cyclist must follow. These laws ensure the safety of cyclists, motorists, and pedestrians.

Bicycle safety laws are strictly enforced in Delaware, so be sure to study them carefully!

Bicycle Maps are
available from the:

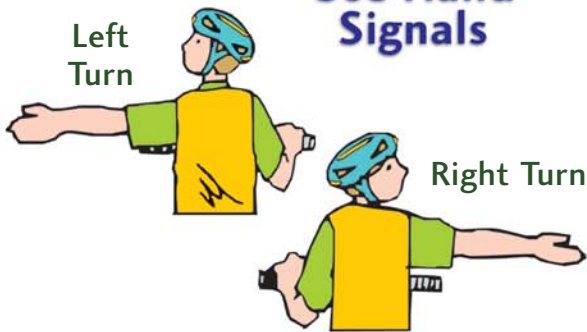
**Delaware Department of
Transportation**

800 Bay Road
Dover, DE 19903
800-652-5600
www.deldot.net



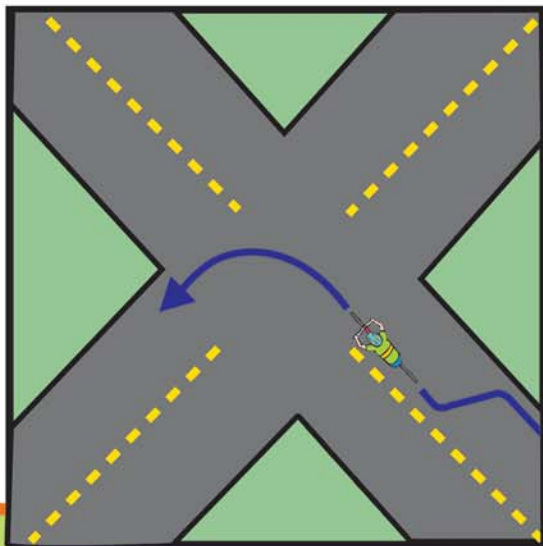
Delaware is Serious About Enforcing Bike Safety Laws

Use Hand Signals



Right Way to Turn Left

Ride on right, carefully move to the left of lane for left hand turn.



Always Ride in the Same Direction as Traffic



Use Proper Safety Equipment



Helmet
(Required by law if under the age of 16, but recommended for all ages.)

Reflective Clothing

Headlight and Reflectors on Your Bike

Obey All Traffic Signs & Signals



Don't Drink & Ride!

Drinking and driving laws are the same for cars and bikes.

Headphones Must Not Cover Both Ears!

